









Para verificar a autenticidade, acesse o site do MPE/TO e use a chave: 57ea1a9c - a5ec3ec2 - 87dfd397 - cf21c18a





Para verificar a autenticidade, acesse o site do MPE/TO e use a chave: 57ea1a9c - a5ec3ec2 - 87dfd397 - cf21c18a

Anexo ao Edital XPB-REVA-01/2025 (P.O. Nº 010/2025) - SPM/TO nº 015/00000













Para verificar a autenticidade, acesse o site do MPE/TO e use a chave: 57ea1a9c - a5ec3ec2 - 87dfd397 - cf21c18a





















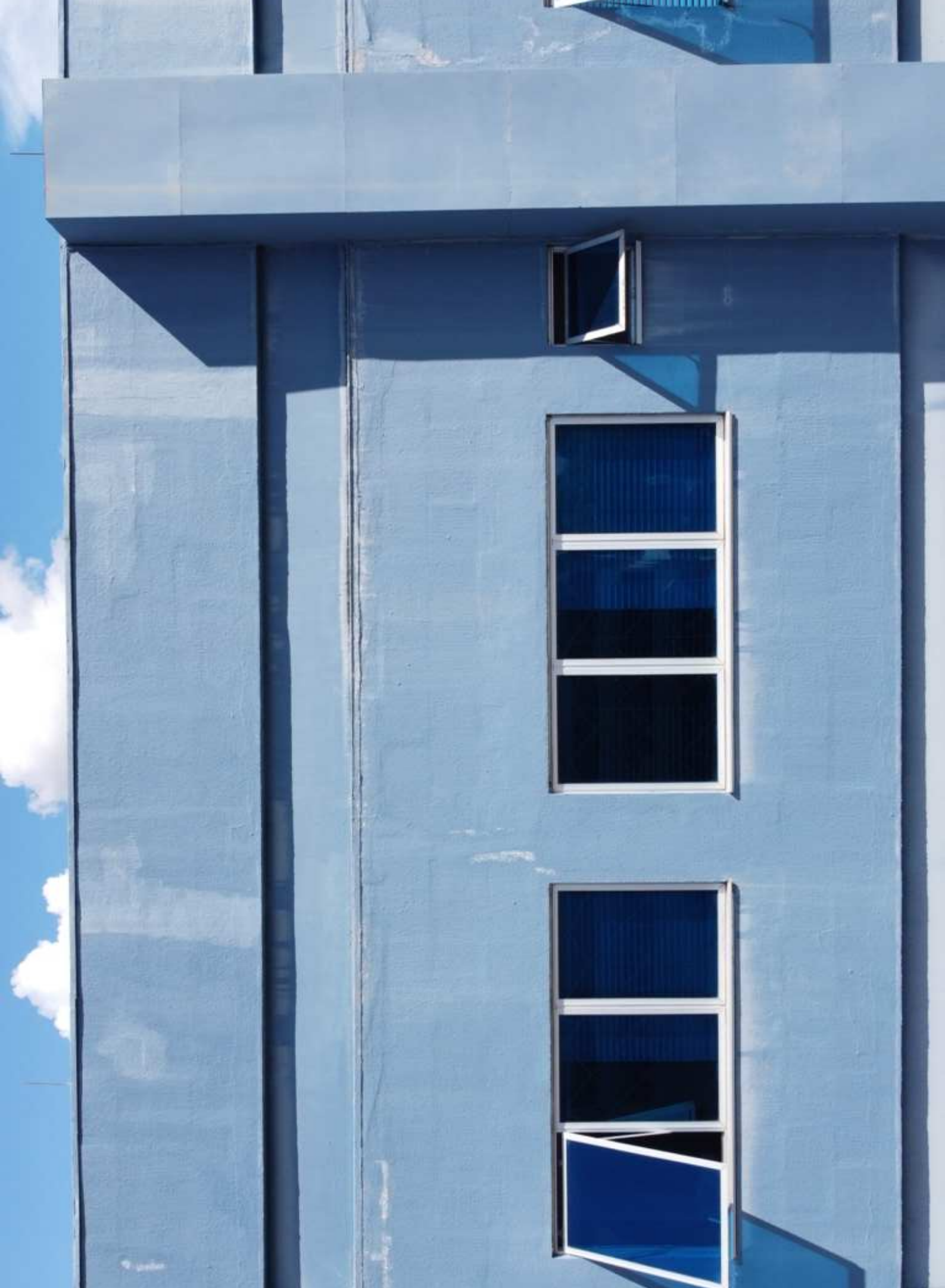






















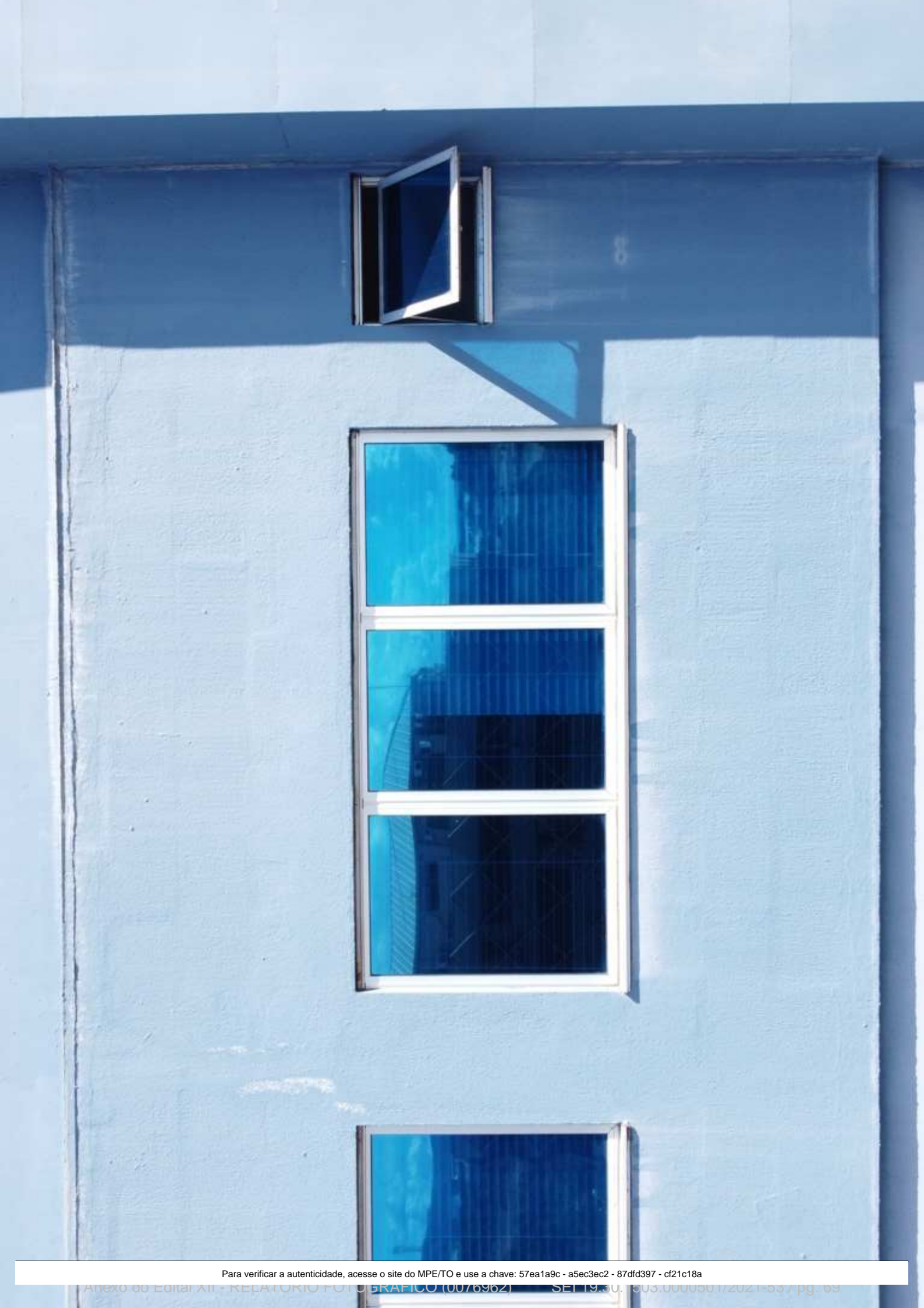
















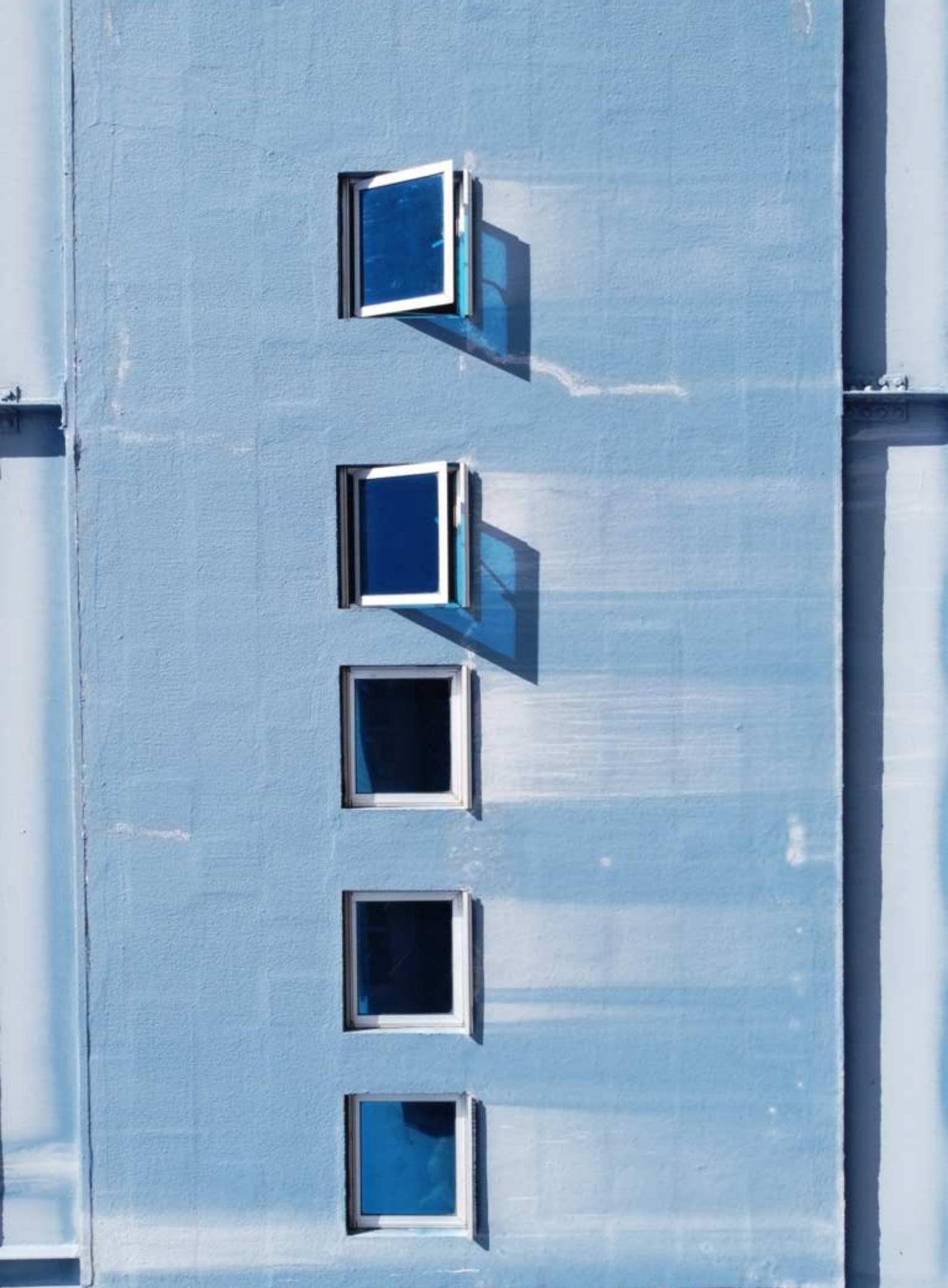


















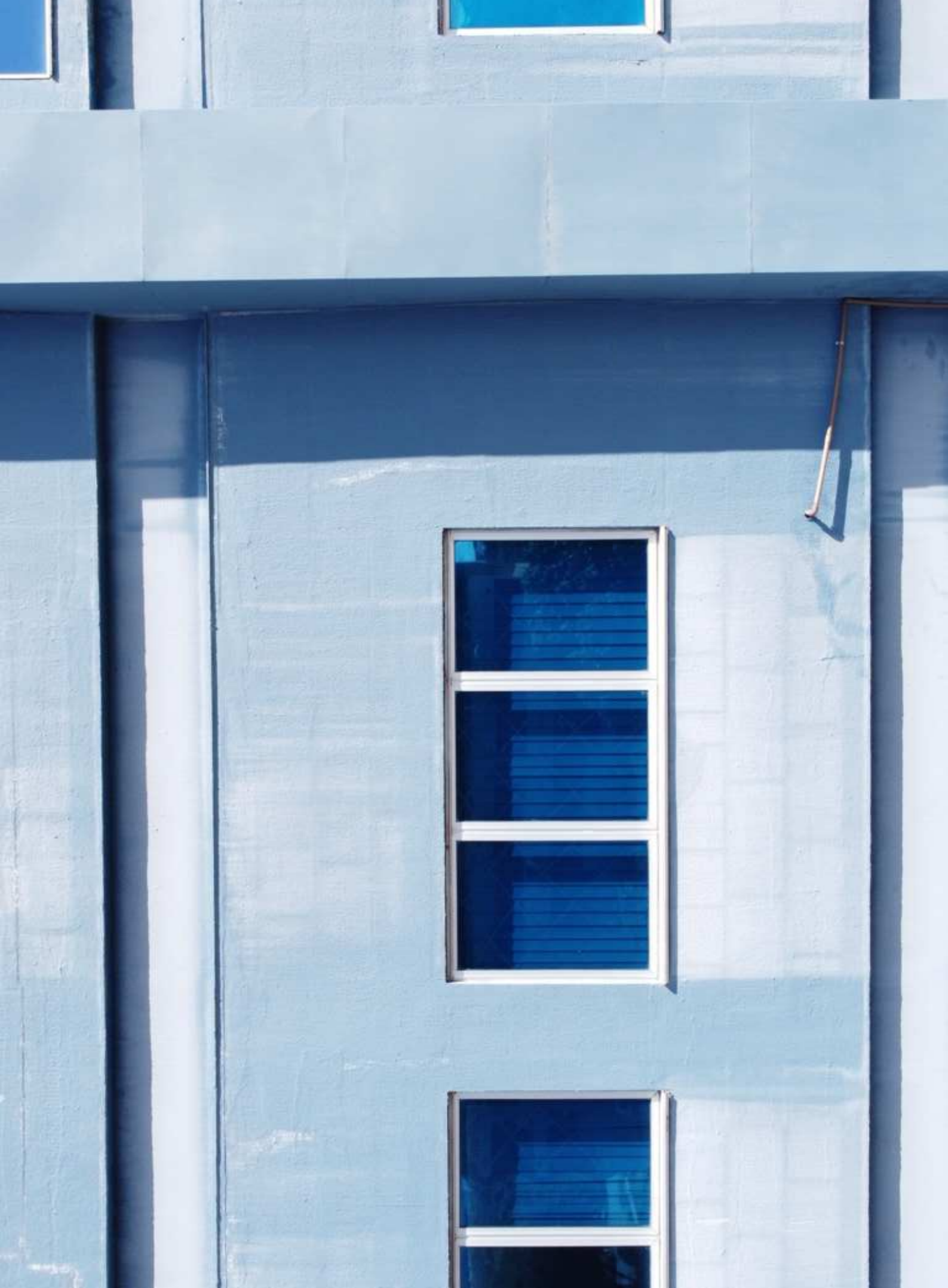




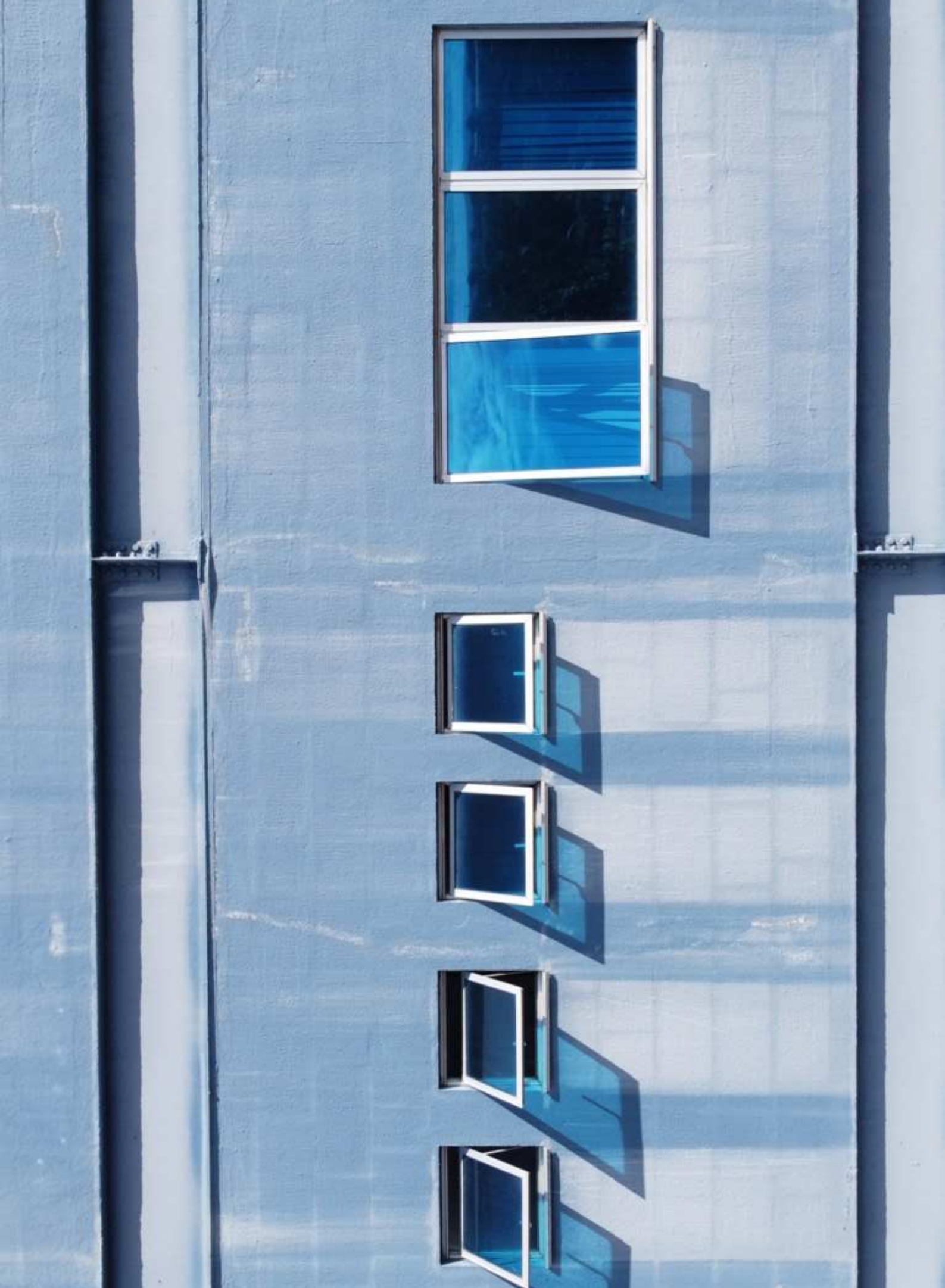






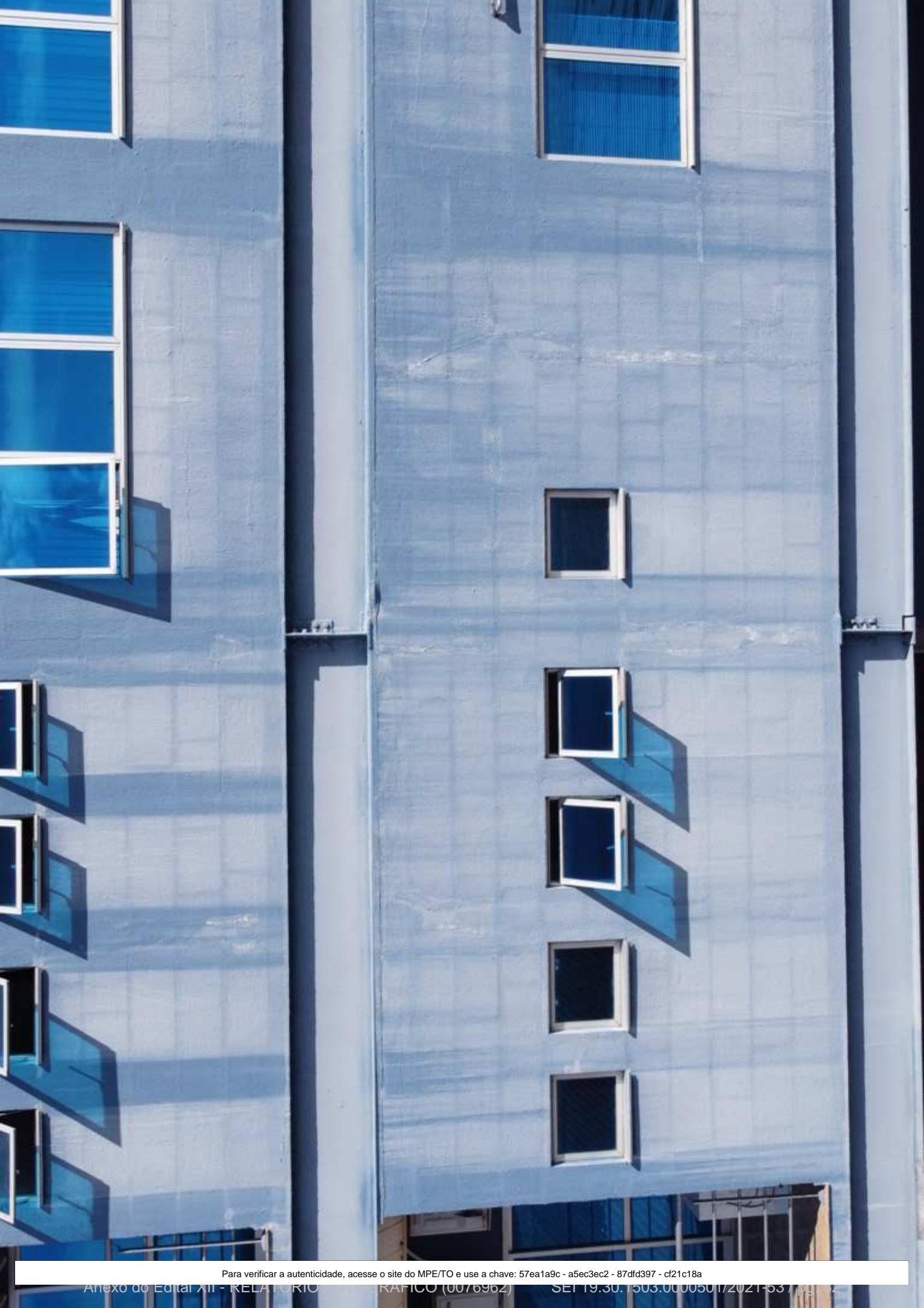


































Para verificar a autenticidade, acesse o site do MPE/TO e use a chave: 57ea1a9c - a5ec3ec2 - 87dfd397 - cf21c18a

















Para verificar a autenticidade, acesse o site do MPE/TO e use a chave: 57ea1a9c - a5ec3ec2 - 87dfd397 - cf21c18a







